



*Animals avoid plants  
before they bite—not after!*

# Plantskydd®

**ANIMAL REPELLENT**

**DEER • RABBITS • ELK**

**APPLY ON DRY PLANTS—Rainfast in 24 hours**

- **Deer / Elk...** spray or dip mainly top of plant until wet, but not dripping.
- **Rabbits...** spray stem and lower leaves.
- **ORNAMENTALS**—spray mainly leaves of plants until wet—avoid blossoms.

**Always treat new growth.**

- Test sample plants to determine sensitivity. *Needles/leaves darken temporarily after treatment—original color returns in 1 or 2 days.*
- Apply at above freezing temperature.
- Avoid application in direct hot sunlight—for best results, apply in early morning or late afternoon. *Expect some reduction in efficacy in sunny climates (photodegradable).*
- Treating Pine seedlings during bud flush is not recommended (OK before/after bud flush).



Lasts up to 6 months over winter on dormant ornamental shrubs.

**SOLUBLE POWDER CONCENTRATE**

**2.2 lb / 1 kg Made in USA**



**OMRI™**  
**Listed**

Plantskydd powder concentrate is listed by the Organic Material Review Institute (OMRI) for use in production of organic foods and fibre.

**REPELS BY ODOR**  
**NOT UNPLEASANT TO APPLICATORS**

**PROVEN EFFECTIVE**  
**FOR UP TO 6 MONTHS**

- **DO NOT** ingest powder/solution—wash hands after use.
- **DO NOT** apply directly onto edible parts of fruit, vegetables and other food crops.
- Wash fruit and vegetables before eating.
- If solution comes into contact with eyes or skin, wash/flush with water.
- Avoid spraying concrete and wood to prevent discoloration.
- Rinse sprayer, gloves and planting equipment after use.
- If sprayer clogs, rinse in hot water.
- Use mixed solution within a few days.
- Seal unused powder and store in a cool, dry, dark place for up to 2 years.

**DISPOSAL:** *Rinse empty container thoroughly—Recycle or dispose with household garbage.*

**KEEP OUT OF REACH OF CHILDREN & PETS**

DILUTION RATES	Plantskydd	Water	Treatment	Treats
BROADLEAF PLANTS	2.2 lb / 1 kg 8 cups 1 cup	2 gal 8 quarts 1 quart (4 cups)	Spraying Spraying Spraying	400 - 600 plants 1 ft high 400 - 600 plants 1 ft high 50 - 75 plants 1 ft high
CONIFERS	2.2 lb / 1 kg 2.2 lb / 1 kg	1.5 gal 1.5 gal	Dipping Spraying	700 - 800 plants 1 ft high 400 - 600 plants 1 ft high
DECIDUOUS TREES —in leaf	2.2 lb / 1 kg	2.0 gal	Spraying	Varies according to species
DECIDUOUS TREES —dormant	2.2 lb / 1 kg	.75 to 1 gal	Apply on stems with paint brush	Varies according to species



**DO NOT FREEZE**



**KEEP AWAY FROM HEAT**

Plantskydd—developed in Sweden—**now made in USA** from 100% natural ingredients.

**Active Ingredient:** dried blood (porcine and/or bovine) 99.84%, **Inert Ingredient:** vegetable oil 0.16% .

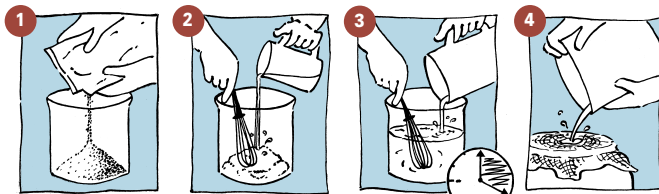
In the United States, \*bloodmeal\* is an EPA (Environmental Protection Agency) exempted product/minimum risk pesticide and is exempt from the Federal Insecticide, Fungicide, and Rodenticide Act requirements, specifically under Section 25(b) (c.f. Federal Register, 61(45), Mar. 6, 1996) and therefore is not subject to federal registration.

**"EPA has determined...that the use of these pesticides poses insignificant risks to human health or the environment..."**

**The Agency (EPA) in promulgating this rule, is responding to society's increasing demand for more natural and benign methods of pest control...."**

May 6, 1996 USA—EPA

## MIXING INSTRUCTIONS:



**1** Pour powder into mixing container. **Wet container first to avoid powder sticking to sides.**

**2** Slowly stir equal parts of lukewarm water into powder to make a lumpless paste/slurry—a kitchen whisk is ideal.

**3** Add rest of water. Stir gently to avoid foaming. Allow to stand for a **minimum of 20 minutes.**

**4** Pour solution through fine mesh filter or cheese cloth into hand or backpack pressure-type sprayer.

Plantskydd soluble powder concentrate also available in 22lb / 10kg BULK

For testimonials, FAQ's, field trial results and Dealer information, visit our website:

[www.plantskydd.com](http://www.plantskydd.com) or call TOLL FREE 1-800-252-6051

Tel: (604) 885-3535 Fax: (604) 885-3522 Email: [info@treeworld.com](mailto:info@treeworld.com)

**Tree World, Inc—USA**  
Western New York F.T.Z.O.  
10 N. Gates Avenue  
Lackawanna, NY, 14218

**Tree World—CANADA**  
4466 Stalashen Drive  
Sechelt, British Columbia  
V0N 3A1

Primary Agent



**TREE WORLD®**



**FORESTRY • PROFESSIONAL GROWERS • GARDENERS**